

# Centro de Salud Santa Clotilde (CSSC). Napó River Peru



# Centro de Salud Santa Clotilde (CSSC).

- Located in Santa Clotilde; small village on Napo River, in Northeastern Peru, in a region inhabited by indigenous people
- The CSSC is the head of a network of 12 health establishments along 400km of the Napo River and serves 100+ villages and a population of over 20,000.



# Centro de Salud Santa Clotilde (CSSC). Napo River. Peru

- Three doctors ( 1 of them pediatrician)
- 32-bed hospital that includes a general medical area, a labor and delivery, laboratory and a single OR





# Centro de Salud Santa Clotilde.

- Patients unable to be treated at the CSSC are stabilized and transferred to Iquitos and if needed flown to Lima

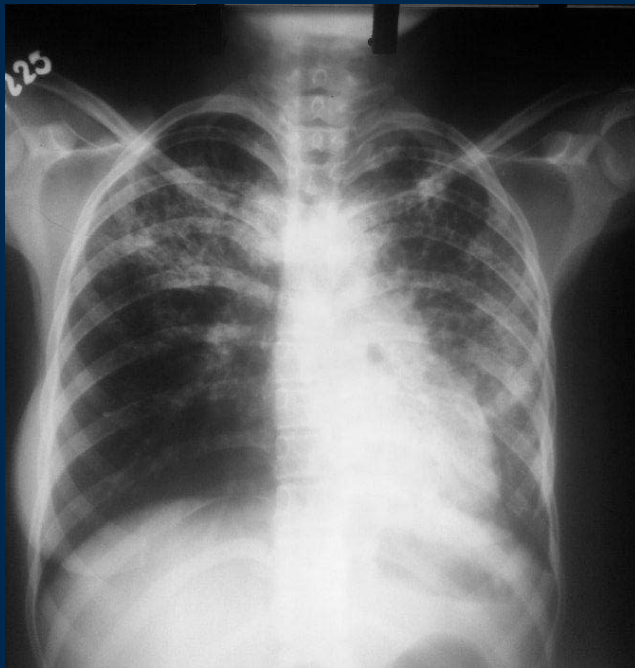


# Centro de Salud Santa Clotilde (CSSC). Napó River. Peru

- In 2013 there were 69,000 outpatient visits and 1115 admissions
- There is a portable U/S machine with a single convex probe; mainly used for OBG



1. They have a portable x ray machine which is not yet operative
2. Patients who need x rays are sent to Iquitos via one day boat trip and come back with the x rays ( without interpretation)
3. So far the doctors are sending me x ray cases via whatsapp for interpretation.



1. The village only provides power 8 hours a day. The hospital has a generator which is if needed ( surgery/ labor/delivery).
2. They have decent internet connection via long distance wifi powered via a solar panel
3. Local contact person is Juan Jon Rabines:  
[jonrabines@gmail.com](mailto:jonrabines@gmail.com)

