



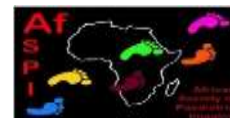
WFPI REPORT May 2016 – May 2017

Gloria Soto Giordani

Founding Societies



the Society for
Pediatric Radiology



WFPI Council: Executive Committee



President
Gloria Soto
SPR



Vice-President
Wendy Lam
AFSP



Secretary
Dorothy Bulas
SPR



Vice Secretary
Jaishree Naidoo
AFSP



Past-President
Veronica Donoghue
ESPR



Founding President
Ines Boechat
SPR



Treasurer
Rutger Jan Nievelstein
ESPR



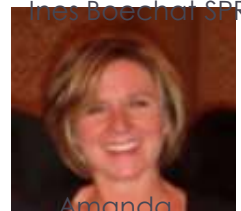
Vice Treasurer
Richard Barth
SPR



Education Leader
Brian Coley
Digital
SPR



Outreach leader
Cicero Silva
SPR



Amanda
Dehaye



Kimberley Applegate
SPR - Image Gently

- Meets monthly (online), addresses current issues, establishes project priorities, provides budgetary and project oversight

WFPI Representative Directors 2016-2017



- ◆ AfSPI- Omolola Atalabi, Gladys Mwango
- ◆ AOSPR- Bernard Laya, Abrah Hayat
- ◆ ESPR- Erich Sorantin, Eva Kis
- ◆ SLARP- Celia Ferrari, Alexandra Monteiro
- ◆ SPR- James Donaldson, Rebecca Stein-Wexler



May 2016 – May 2017



Achievements and work in progress

- ◆ Digital Education
- ◆ Outreach
- ◆ TB Group
- ◆ Mapping project
- ◆ Scholarship Program
- ◆ Administrative and financial issues

Digital Education



2016: A priority area of future WFPI development...

We need a sustained and substantive digital education effort to accomplish WFPI's mission of improving the quality of imaging of children globally

Digital Education



- Project Leader: Brian Coley (July 2016)
- Collaborators:
 - Amanda Dehaye, Kim Pede, Jennifer Boylan
 - Sanjay Prabhu & Mónica Gilsanz (Social media: Website, Facebook, Tweeter)
 - Ricardo Faingold (WFPI link to Sonoworld)



Digital Education



- Do we really know what is needed in the field?
- Do we know which is the most efficient format to deliver digital education in different regions and areas?



Should be the basis for broad range of future efforts

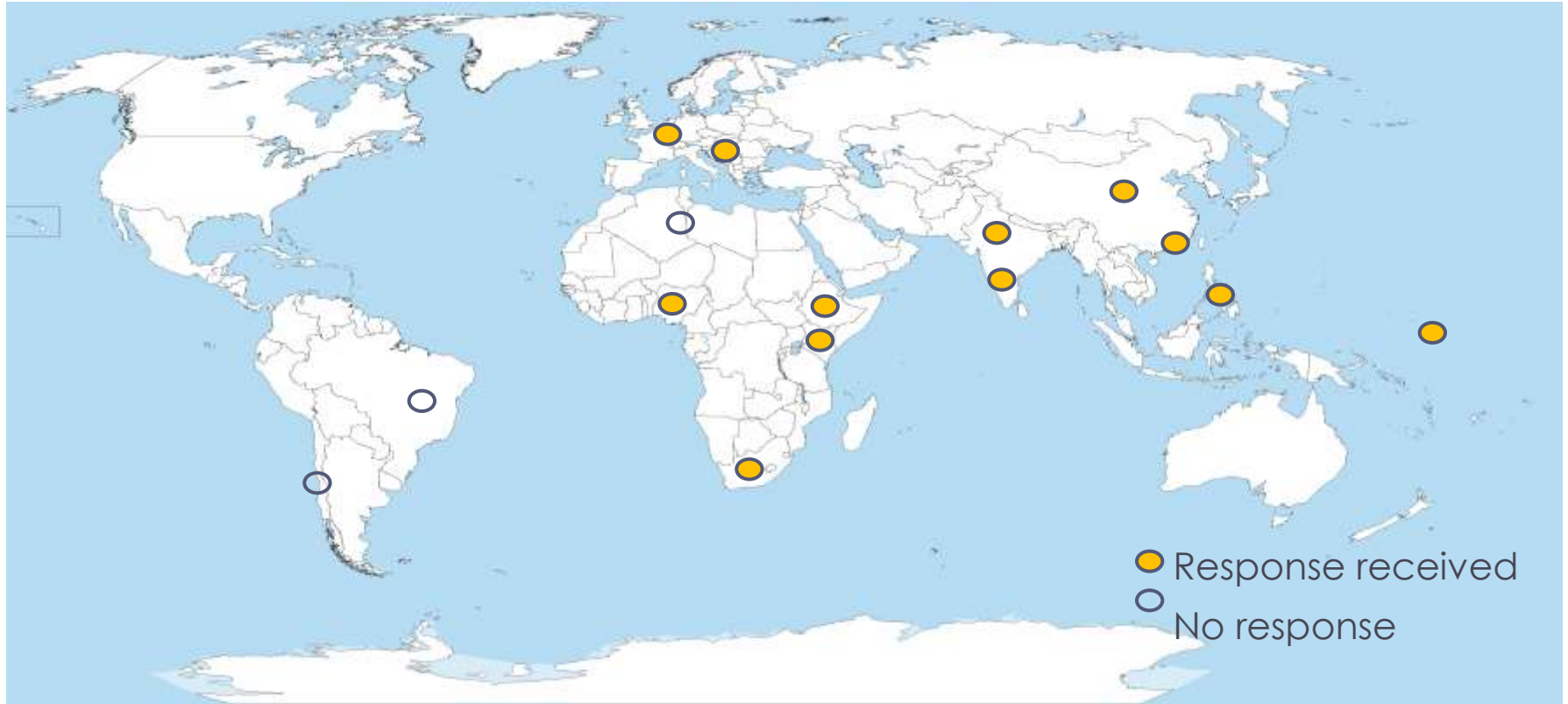
Digital Education



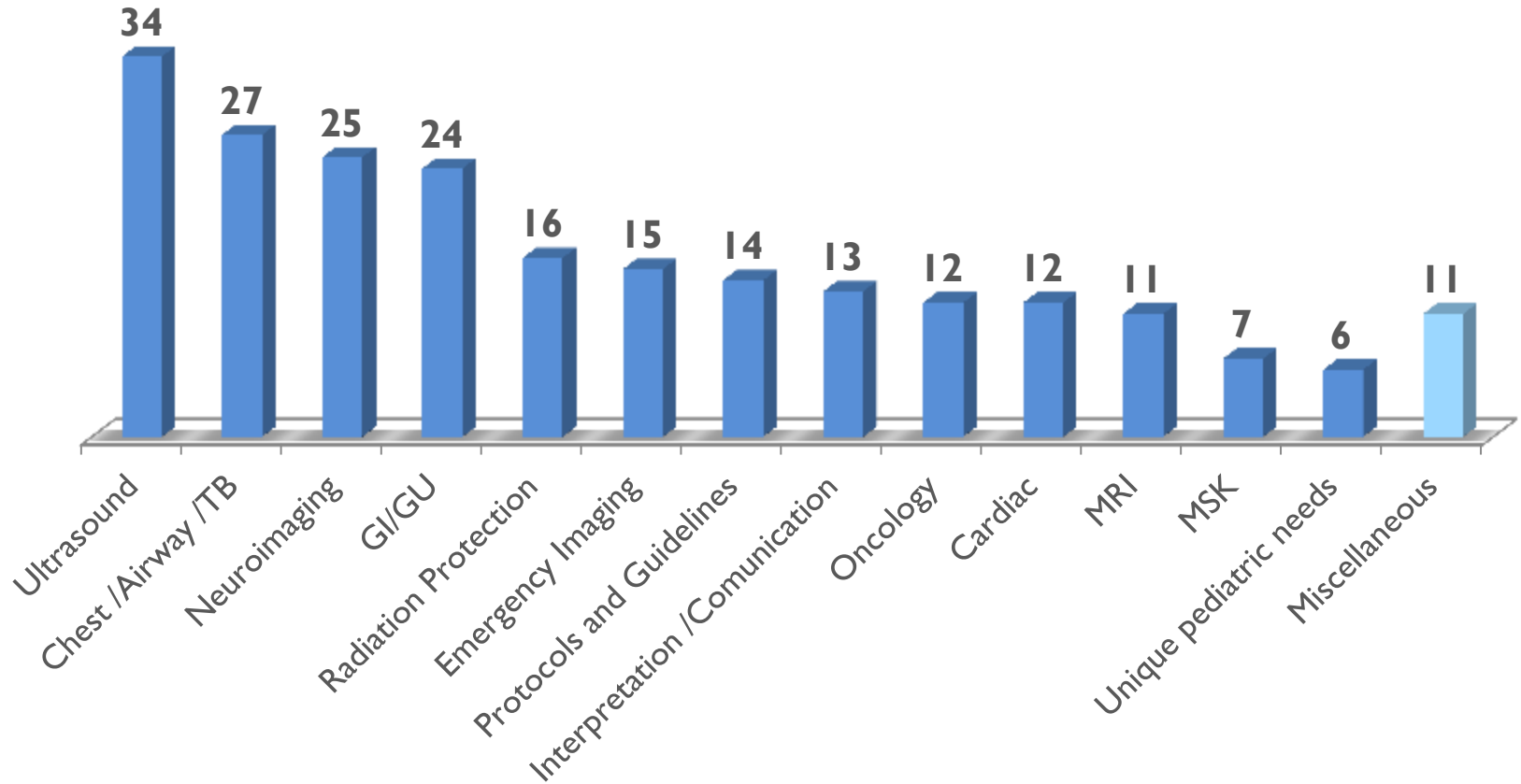
Survey to collect view points regions: both from teacher and recipient perspective in middle and lower resource

- Who acquires pediatric imaging studies?
- Who interprets them?
- **What educational topics are needed?**
- Format, devices, and connectivity?
- Communication methods?
- *Image gently questions included*

Survey to regional partners: 34 responders from 12 countries in



Educational topics – (number of mentions as “needed”)



Digital Education Project: Next Steps



- Determine curriculum prioritized to needs
- Assess current WFPI offerings, determine gaps, fill with existing materials, determine need for new content
- Partner with content providers (e.g. *SonoWorld*)
- Assess current website content and navigation and determine time and cost effective restructuring **(WFPI's website will be the main repository of this content)**

Work in Progress!!!!

Outreach programs

Cicero Silva: Outreach Leader



- ▶ Telerreading
- ▶ Expert-opinion
- ▶ On-site teaching and training
- ▶ WFPI Grants for outreach projects

Outreach programs



Telerreading

Objective: provide an expert opinion on pediatric imaging studies from low-resource sites with limited access to pediatric radiologists

- 35 Tele-readers
- Colegium Telemedicus platform
- Referrer sites:
 - Laos Friends Hospital for Children (Laos): 383 cases
 - Hospital Central de Maputo (Mozambique)



667 cases from Jan 2016 – April 2017 (plus opinions for MSF)

WFPI onsite outreach programs

- ▶ March 2016: Laos Trip sponsored with WFPI outreach funding)
- ▶ Team lead Dr. Ramdas Senasi, UK



- ▶ On-site teaching & training by a team of volunteers (MD, radiographer, sonographer)

WFPI onsite outreach programs



Nov 2016: Teaching trip to Maputo Central Hospital in Mozambique supported by WFPI /UCLA Global Health Project (Ricardo Faingold)

- 9 lectures and case show sessions
- Clinical, surgical, and radiology rounds.
- Bedside US exams performed in Surgical, pediatrics and NICU sections.
- 3 workshops of neonatal US in the NICU . Also helped assemble the NICU US equipment and make it fully functional



WFPI onsite outreach programs



- ▶ March 2017: South Africa POCUS Mission Trip. (WFPI supported funding via Outreach grant). Lead by Savvas Andronikou



- ▶ Goal: **build relationships** with local doctors that may facilitate repeat visits, as well as support distance tele-reading and further training.
- ▶ Visited 3 different settings during a 2-week period
- ▶ They taught chest X-ray interpretation for TB and point of care US for pneumonia.

Outreach programs

Ongoing projects:

“Series of 12” project Co-sponsored BSPI

Aimed at radiology and non-radiology trainees in high and lower resource settings

- ▶ Illustrated series of chosen topics in pediatric radiology.
- ▶ One case from the series rolled out monthly through a link on the outreach corner of the BSPR and WFPI websites.
- ▶ The first *“A series of 12 Well positioned Tubes, Drains and Catheters”* –

Outreach programs



Ongoing projects:

Online lectures to be used by WFPI volunteers on their pediatric imaging outreach trips are being created to assure consistency of contents and methods, especially for follow-up visits to same site by different training teams.

- First modules are on radiography of chest, abdomen, cervical spine, undergoing peer review.

Outreach programs



Ongoing project:

Teach the Outreachers POCUS through Video Training'-

POCUS pneumonia video clips from South Africa collated by Savvas

Outreach programs



Ongoing projects:

- ▶ Partnership with Zithulele Hospital (South Africa) for expert-opinion on imaging studies
- ▶ Follow-up on on-site teaching and training in Laos later this year
- ▶ New call for a US\$1.500 grant to support an onsite outreach program (2017)

A screenshot of the WFPI website's 'OUTREACH' page. The navigation bar at the top includes 'Home', 'ABOUT', 'EDUCATION', 'OUTREACH', and 'CHILD IMAGING SAFETY'. The main content area features a header 'Project funding - could it be for you?' and a sub-header 'ONSITE TRAINING GRANTS - APPLICATIONS NOW OPEN! DEADLINE: JAN 31 2017'. Below this is a photograph of medical professionals in a clinical setting. To the right of the photo, the text reads 'Funding availability' and 'With the approval of the Council, WFPI's treasurer has put aside \$25 000 of internal funding for allocation to projects in early 2017'. At the bottom, a list of funding criteria is provided: 'Funding proposals can cover either' followed by two bullet points: '• WFPI-approved projects (see website www.wfpfi.org, homepage "outreach" dropdown menu), or' and '• projects that could become WFPI-approved - i.e. that fit these guidelines'.

WFPI TB Group



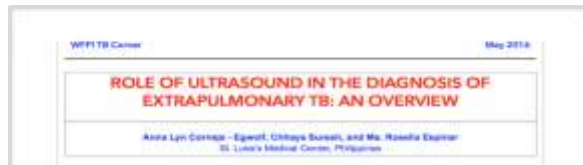
Lead By Bernie Laya

22 members with representatives from all over the world

Achievements



- ▶ Tele reading and expert opinion for Lao Friends Hospital for Children
- ▶ Online Publications on Childhood TB (3 articles released on WFPI TB Corner of WFPI website)



May 2016



July 2016



November 2016

Work in Progress: TB Minisymposium



- ▶ May 2016: Project conceptualization started (lead by Bernie Laya)
- ▶ International collaboration: participation of childhood TB Imaging experts from all over the world
- ▶ 5 Relevant Topics
 1. *Standardization of Radiographic Interpretation*
 2. *TB Lymphadenopathy*
 3. *Imaging Modalities*
 4. *TB and HIV*
 5. *Extra pulmonary TB*

Work in Progress: TB Minisymposium



- ▶ Submitted to Pediatric Radiology Journal in Nov 2016
- ▶ Status as of May 2017: All articles have been approved and ready for Publication in Pediatric Radiology Journal
- ▶ Efforts will be made to make articles Free Access

Pediatric Radiology Fellowship in Ethiopia

January 2015: 2 year Pediatric Radiology Fellowship Program launched in Addis Ababa, Ethiopia, under a CHOP and Addis Ababa University collaboration with WFPI auspice

December 2016: first program finalized.



▶ **February, 2017:** Graduation ceremony of first 2 Pediatric Radiologists. WFPI represented by Savvas Andronikou.

World Federation of Pediatric Imaging



2016: Global overview of pediatric Imaging resources: develop information of pediatric radiologist`s presence, training and needs around the world (to guide outreach programs)

WFPI Pediatric Radiology Global Mapping Project

WFPI is the only pediatric radiology organization with the ability to take on this challenge and expect reasonable results!

Pediatric Radiology Global Mapping Project



Objectives:

- Establish the number of Pediatric Radiologists per country globally
- Outline the training pediatric radiologists receive and availability of training centers
- Highlight major disparities and gaps in the availability of pediatric radiologists and pediatric imaging training
- Based on this data create a road map for WFPI's global efforts

Methodology



1. Survey to collate information
2. Recruitment of contacts from different countries/regions responsible for responding the survey
3. Collate and analyze the data
4. Construct a Global Map of Pediatric Radiologists and Pediatric Radiology training centers

Methodology



An important issue

When we talk about a Pediatric Radiologist.... What are we talking about?

Respect local definitions according to training pathways... and integrate this information into the results (important when analyzing / comparing data!)

Survey



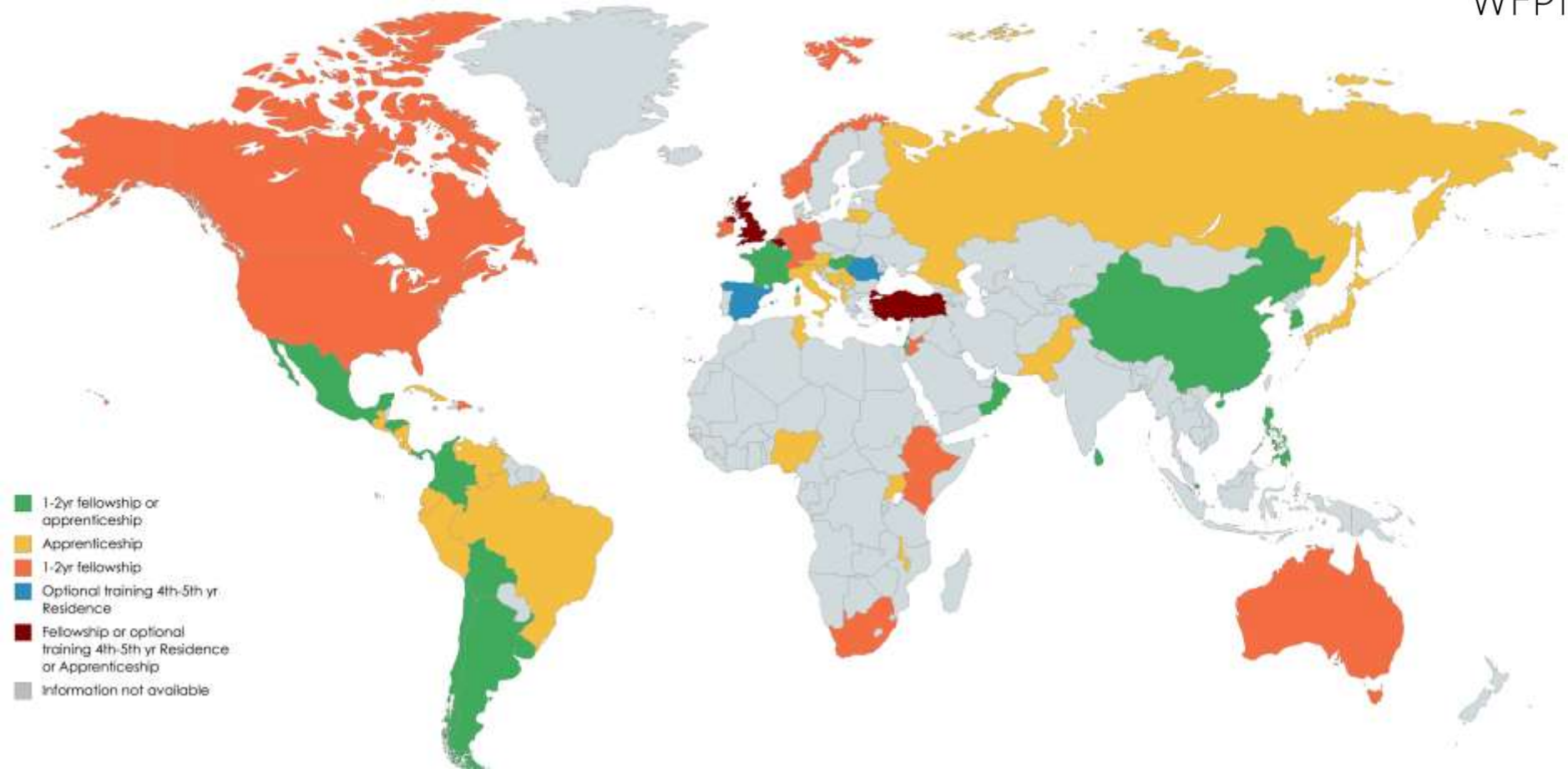
1. How are Pediatric Radiologists defined in your country according to their training pathway
2. Number of pediatric radiologists in the country (as defined in question 1)
3. Number of centers offering a 1-2 year long pediatric radiology training programs
4. Radiological equipment available in Pediatric Radiology training centers

Responses received from 92 countries



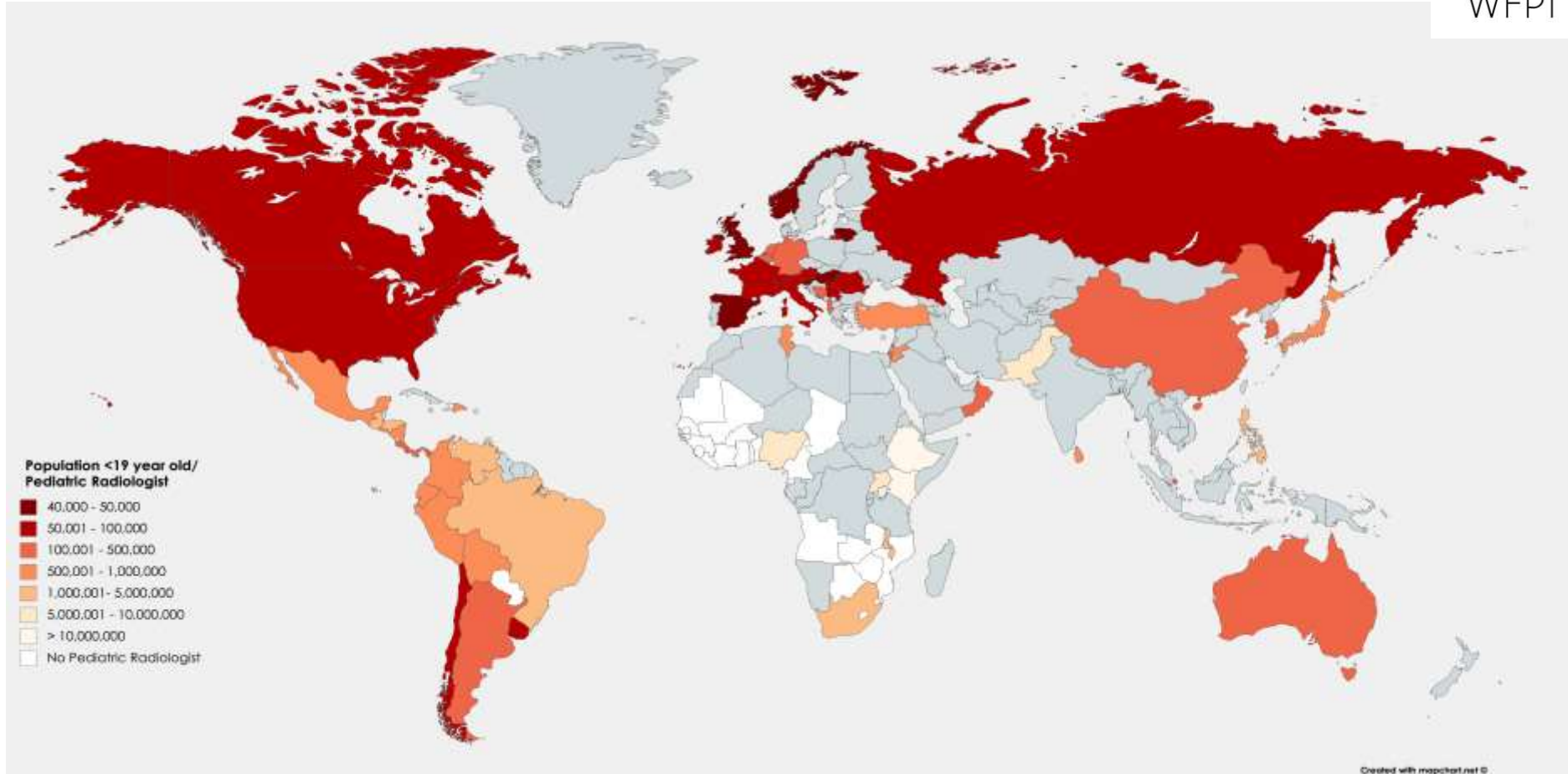
- Africa: 34
- Asia – Oceania: 16
- Europe: 20
- Latin America: 20
- North America: 2

Definition of a “Pediatric Radiologist” according to training pathway

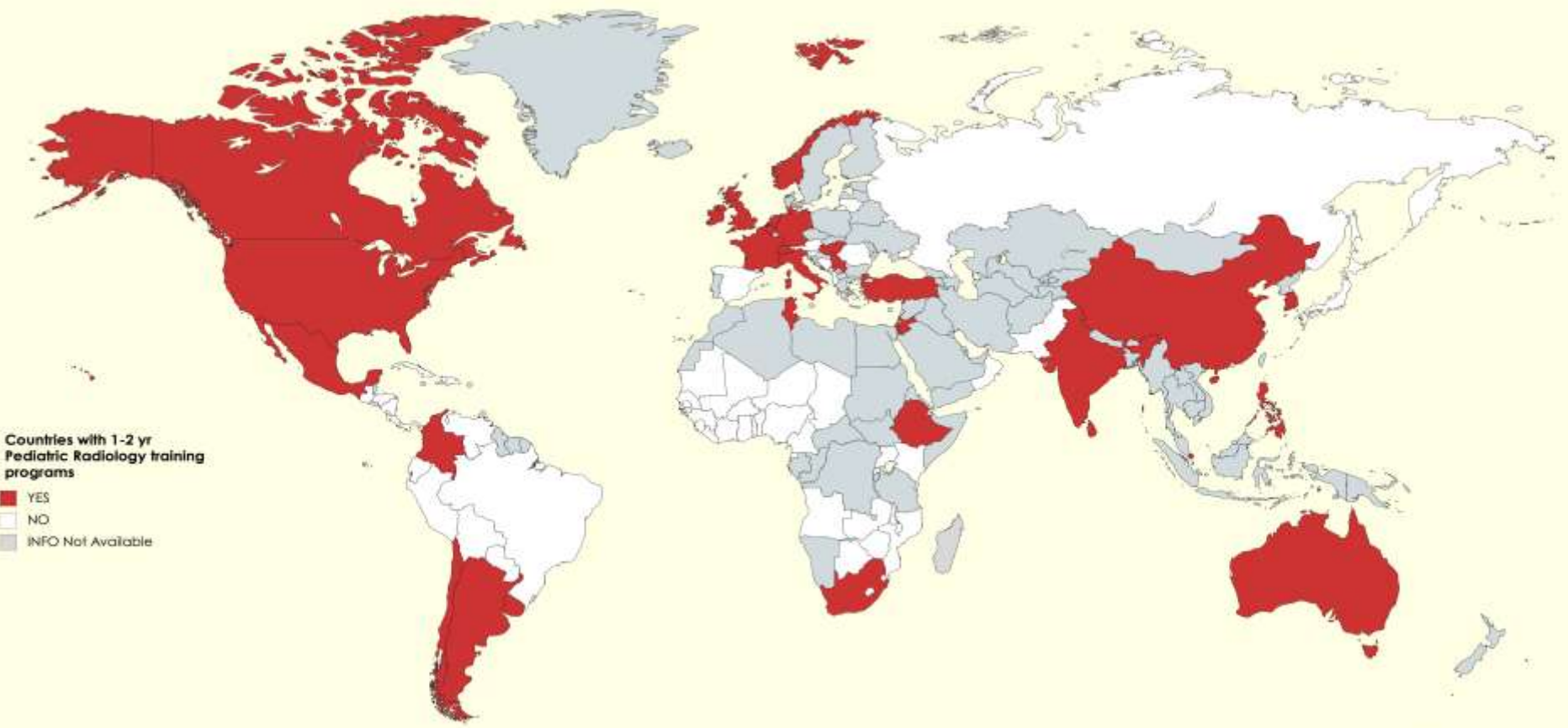


- 1-2yr fellowship or apprenticeship
- Apprenticeship
- 1-2yr fellowship
- Optional training 4th-5th yr. Residence
- Fellowship or optional training 4th-5th yr Residence or Apprenticeship
- Information not available

Availability of Pediatric Radiologists (Population < 19 yrs* / Pediatric Radiologist)



Countries with Pediatric Radiology Training Centers



WFPI Mapping project

- ▶ Results accepted to be presented at the SPR and ESPR 2017 meetings
- ▶ **Work in progress-** publish the results in Pediatric Radiology Journal

Thanks to our key contacts and collaborators:

AFRICA

- ▶ Gladys Mwangi
- ▶ Jaishree Naidoo
- ▶ Omolola Talabi
- ▶ Suzgo Sam Mzumara
- ▶ Jean Jacques Nshizirungu
- ▶ Azza Hammou
- ▶ Kisembo Harriet Nalongo
- ▶ Yocabel Gorfu

ASIA - OCEANIA

- Wendy Lam
- David Stringer
- Marielle Fortier
- Timothy Cain
- Maggie Zhong
- Kushaljit Sodhi
- Shunsuke Nosaka
- In-one Kim
- Zeid Alaween
- Bernie Laya
- Kishani Pathirana
- Qbal Dogar
- Michalle Soudack
- Komal Kritika Singh
- Ana Akuola
- Dilip Sankhla
- Saud Al-Shabibi
- Glenn Fatupaito

EUROPE

- ▶ Fermin Saez
- ▶ Miguel Angel Lopez Pino
- ▶ Hubert Ducou le Pointe
- ▶ Hans-Joachim Mentzel
- ▶ Kath Halliday
- ▶ Aleksandra Korostyshevskaya
- ▶ Erich Sorantin
- ▶ Sorin Dudea
- ▶ Damjana Ključevšek
- ▶ Rainer Wolf
- ▶ Éva Kis
- ▶ Goran Djuricic
- ▶ Paolo Toma
- ▶ Claudio Granata
- ▶ Mithat Haliloglu
- ▶ Irmina Sefic Pasic
- ▶ Sonja (Saraci) Butorac
- ▶ Rutger Jan Nieveistein
- ▶ Lil Sofie Ording Müller
- ▶ Charlotte de Lange
- ▶ Saulius Rutkauskas
- ▶ Brigitte Desprechins
- ▶ Luc Breyssem

LATIN AMERICA

- Mario Pelizzari
- Lucrecia Postigo
- Alexandra Monteiro
- Gloria Soto
- Federico Lubinnus
- Luis Lobos
- Miguel Ángel Allende
- Víctor Izaguirre
- Eysa Carrasco
- María Isabel Barrantesmonges
- Eric Chong
- Patricia Compten
- Luis Campos
- Anabel Lizardi
- José Briceño
- Ernst Garcon
- Fabián Gonzales
- Beatriz González
- Marta Eugenia Soissa

NORTH AMERICA

- ▶ Inês Boechat
- ▶ Donald Frush
- ▶ Paul Babyn
- ▶ Oscar Navarro
- ▶ Karen Thomas

2017 WFPI New Scholarship Program

Educational Grant to support training of general radiologist in pediatric radiology

- ▶ **Objective:** improve pediatric imaging in regions with low availability both of pediatric radiologists and pediatric imaging training centers
- ▶ **How:** US\$3.000 financial support for a 3 month-training period in well recognized academic centers (same region as the scholar).
- ▶ **Candidates:** Radiologists with special interest and dedication to pediatric radiology with no possibility of training locally.



WFPI Scholarship program

First programs to be held in Africa (African radiologist to be trained in African centers).

- ▶ **2017:** Addis Ababa, Ethiopia
- ▶ **2018** Nelson Mandela Children Hospital, Johannesburg, South Africa

Work in progress:

- ▶ Finalize eligibility criteria for candidates and set a specific training program
- ▶ Call for applications through WFPI social media

Future objective: link the program to specific donations

SPR2017 WFPI Session: *Saturday May 20*

8:00 AM

12:00 PM

WFPI Session: "Outreach in Pediatric Radiology: Addressing Needs, Challenges and Ethical Issues"

8:00 - 8:25 a.m.

Mapping of Pediatric Radiologists Around the World (Availability, Training, Gaps and Needs) to Guide Us Moving Forward
Gloria Soto, MD

8:25 - 9:05 a.m.

Outreach: What Works, What Doesn't The Keys to Success
Digital Outreach

Moderator & Panelist: Brian D. Coley, MD, FACR

Panelists: Bhavya Rehani, MD, Gladys Mwangi, MBChB, MMed and Sanjay Prabhu, MBBS, FRCR

Q&A with the Digital Outreach Panelists

9:05 - 9:15 a.m.

Onsite Outreach

Moderator & Panelist: Cicero Silva, MD

Panelists: Cheri Nijssen-Johnson, MD, Jarred Halton, Kristin DeStigter, MD and Hansel J. Otero, MD

Q&A with the Onsite Outreach Panelists

10:05 - 10:15 a.m.

Catching Up with Clinicians on Point of Care Ultrasound – Our Role in Diagnosis of Non-Radiologists in Lower Resource Settings

Moderator & Speaker: Savvas Andronikou, MBChB, FRCR, PhD

Speaker: Andrew T. Trout, MD

Q&A with the Speakers

11:10 - 11:20 a.m.

11:20 a.m. - 12:00 p.m.

Eat, Pray, Ultrasound: The Ethical Challenges of Radiology Mission Work
Larry A. Binkovitz, MD

Learning objectives

1/ To discuss access and basic needs of pediatric imaging education in lower and middle resource areas as identified by WFPI.

2/ Review how we can develop, deliver and share educational content for optimal use around the world

WFPI Administrative issues

- ▶ **June 2016:** Amanda Dehaye (General Director) reduced her working time from 1,5 days/week to 1 day /week. Kim Pede incorporated as assistant staff (0,5 days /week)
- ▶ **November 2016:** Amanda Dehaye resigned as General Director.
- ▶ A decision has to be made regarding how to restructure our administrative organization. During this transition period Kim Pede and Jennifer Boylan are supporting the administration. Jennifer will hopefully play a major role in the near future.

2017 -2018 WFPI EXCOM Officers



President
Wendy Lam
AOSPI



Vice-President
Omolola Atalabi
AfSPI



Secretary
Jaishree Naidoo
AfSPI



Vice Secretary
Cristian Garcia
SLARP



Past-President
Gloria Soto
SLARP



Founding President
Ines Boechat SPR



Treasurer
Rutger Jan Nievelstein
ESPR



Vice Treasurer
Richard Barth
SPR



Education Leader
Brian Coley Digital
SPR



Outreach leader
Cicero Silva
SPR



Amanda
Dehaye



Kimberley Applegate
SPR - Image Gently

WFPI Representative Directors 2017-2018



- ◆ AfSPI- Khaled Aboualfotouh Ahmad, Gladys Mwango
- ◆ AOSPR- Bernard Laya, Abrah Hayat
- ◆ ESPR- Erich Sorantin, Eva Kis
- ◆ SLARP- Celia Ferrari, Alexandra Monteiro
- ◆ SPR- James Donaldson, Rebecca Stein-Wexler



Thanks!!!!



- To all EXCOM and Council members
- To Ines, for ALWAYS been there!!!
- To Amanda Dehaye, Kim Pede and Jenifer Boylan
- To Berni, Savva, Ricardo, Kassa, Ramdas... and many others that collaborate with WFPI's and dedicate time and energy to work in the different projects
- To all the mapping project collaborators (MANY!!!)
- To the SPR board for their continuous and generous financial support



Thanks!

